

CASE STUDY

MEDICAL & PHARMACEUTICAL

SupplyOne supported a regional medical distributor by implementing standardized protective and secure packaging solutions across multiple product categories.

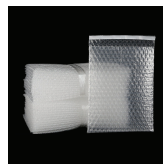
OVERVIEW

A regional medical & pharmaceutical distributor required 8" x 10" peel-and-seal bubble pouches to support daily fulfillment operations.

As discussion progressed, additional needs were identified across corrugated and tamper-evident packaging to improve consistency and security across shipment.

THE SOLUTION

SupplyOne implemented a packaging program to improve consistency, security, and reliability.



Provided 8" x 10" peel-and-seal bubble pouches to support efficient pack-out operations.



Designed custom die-cut cartons to improve product fit, consistency, and protection.



Implemented tamper-evident tape to enhance package security and integrity.



Medical & Pharmaceutical packaging solutions by SupplyOne

SupplyOne Partners With You to Identify What's Best for Your Business



MEDICAL & PHARMACEUTICAL

Reduced on-site inventory by 35% while maintaining fulfillment speed



Standardized protective packaging supporting consistent medical fulfillment operations.